

William C.G. Hodge

Presentation: Colour: A Personal View

Colour Bibliography

Albers, Josef: **Interaction of Colour**, Yale University Press, 2006,
ISBN: 13:978—0-300-11595-6

Chevreur, M.E.: **The Principles of Harmony and Contrast of Colors and Their Application to The Arts**. Schiffer Publishing, 1987, ISBN 0 88740 090 6

De Grandis, Luiginia: **Theory and Use of Color**, Abrams, New York: 1986,
ISBN 0 8109 2317 3

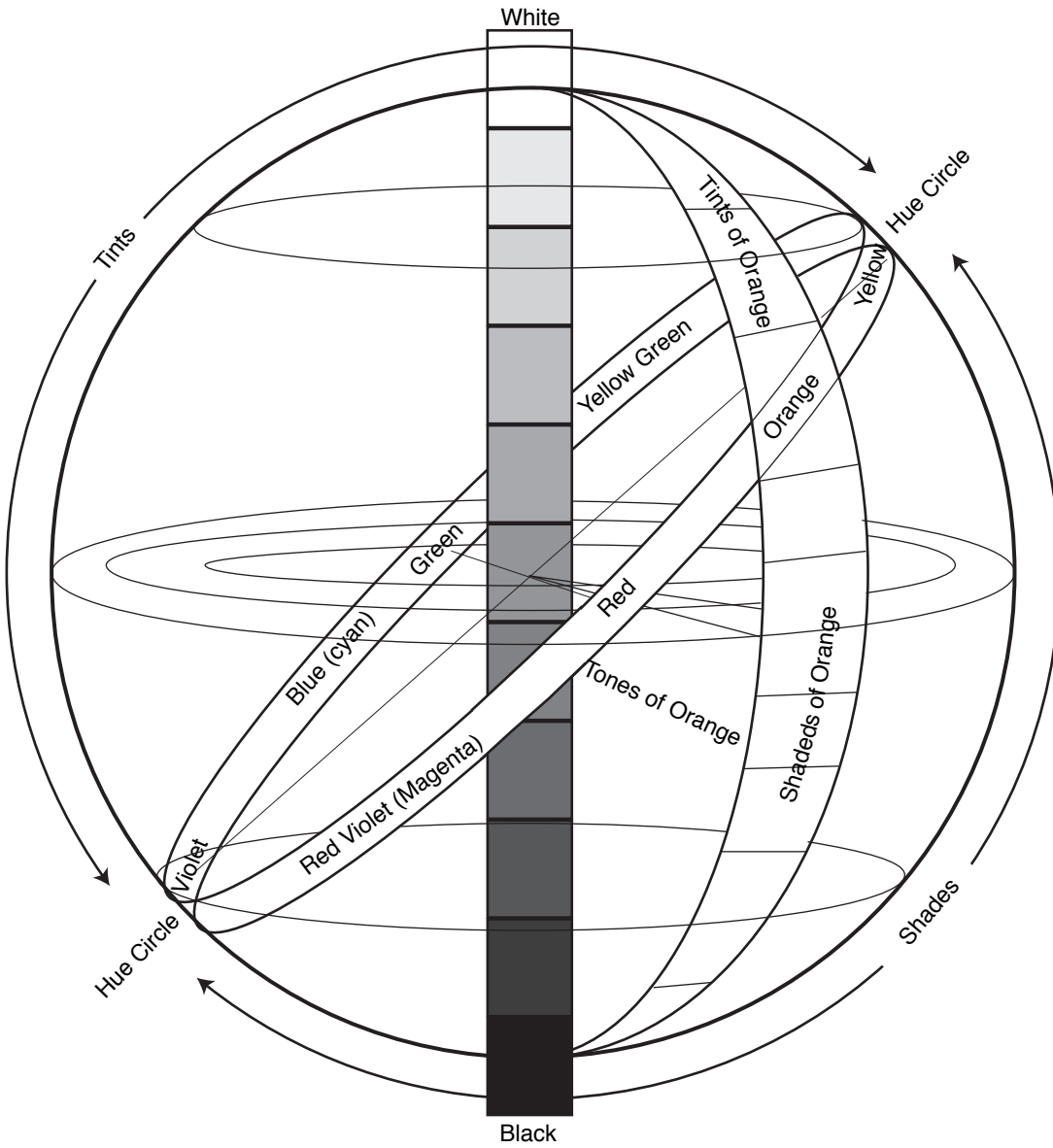
Hickethier, Alfred: **Color Mixing by Numbers**, Van Nostrand Reinhold Co. 1969

Koenig, Becky: **Color Workbook** , Prentice Hall, 2003, ISBN0-13-093317-1

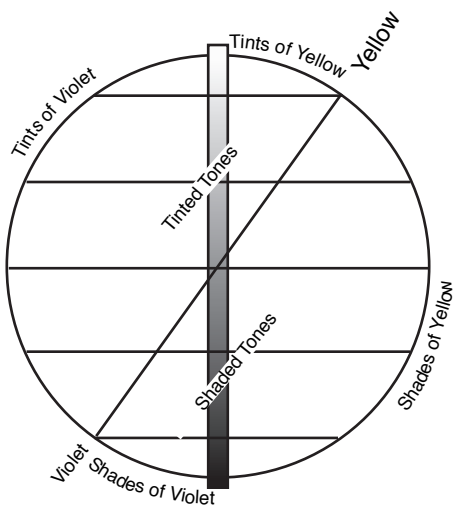
Lambert, Patricia; Staepelaere, Barbara and Fry, Mary G., : **Color & Fiber**
Schiffer Publishing Ltd. 1986 ISBN 0 88740 065 5

Rogondino, Michael & Pat: **Process Color Manual**, Cronicle Books, 2000.
ISBN 0 8118 2757 7

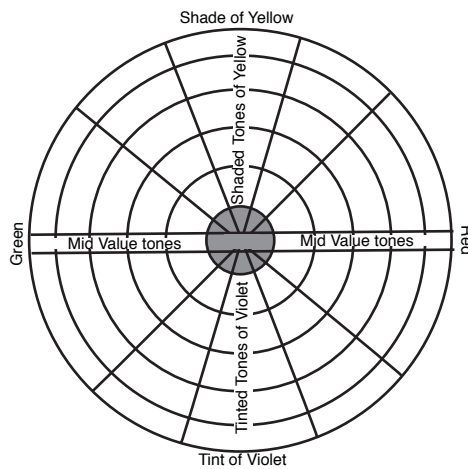
Wilcox, Michael: **Blue and Yellow Don't Make Green** , North Light Books, 1994,
ISBN 0 89134 622 8



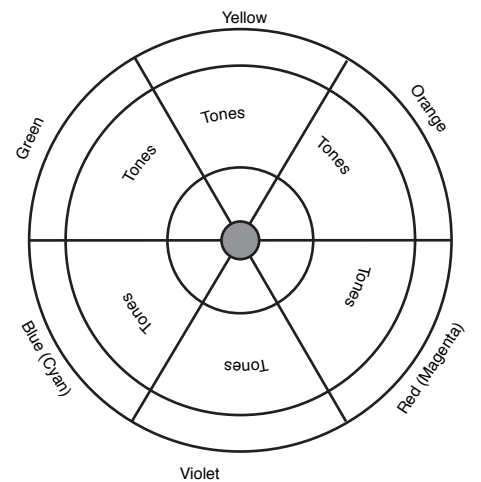
Colour Sphere



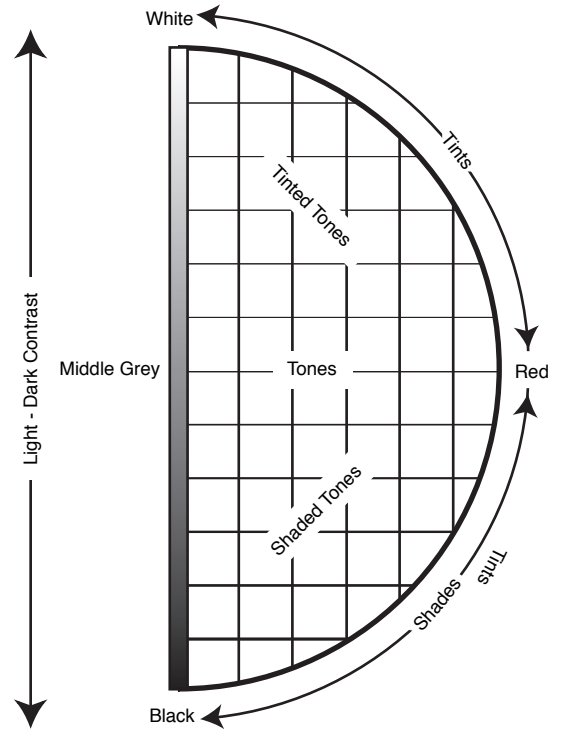
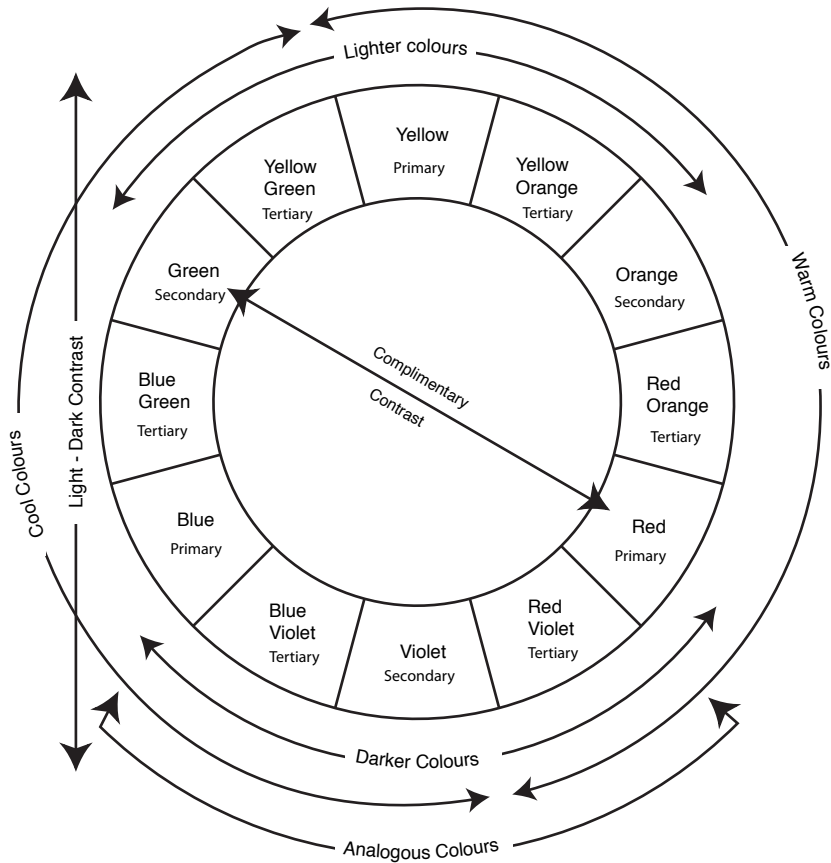
Vertical Slice



Horizontal Slice



Diagonal Slice on Path of Pure Hue



Colour Wheel with Colour Contrast

Primary Colours - Yellow, Red (Magenta), Blue (Cyan)
Colours which theoretically cannot be mixed

Secondary Colours - Orange, Violet, Green
Colours from the mixture of two primary colours

Tertiary Colours - Mixture of of side by side Primary and Secondary colours

Analogous Colours - Three or more colours side by side on colour wheel

Contrasts

Contrast of Hue - The use of pure hues from the colour wheel

Light / Dark Contrast - Contrast of relative lightness and darkness or value
Strongest contrast white-black, yellow-violet

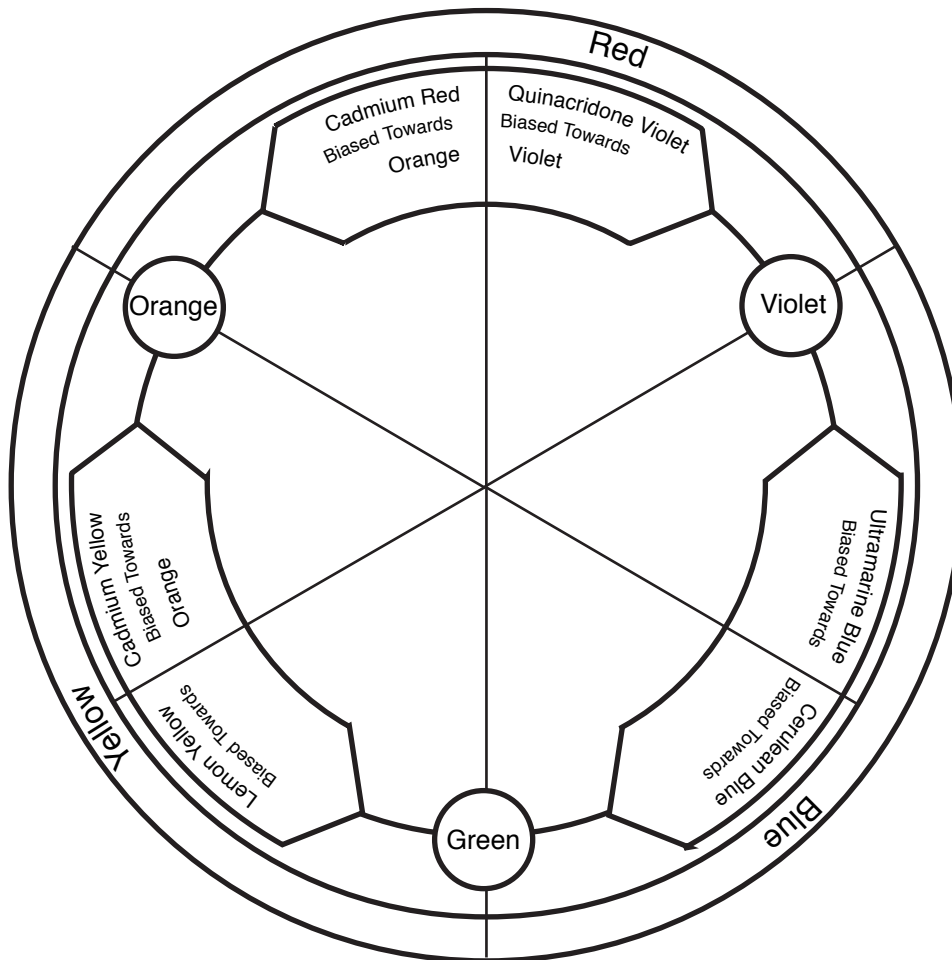
Warm / Cold Contrast - Relative Contrast between colours perceived to be warm or cold. Strongest contrast red orange - blue green

Contrast of Saturation

Red to White - Tints - Light / Dark Contrast

Red to Black - Shades - Light / Dark Contrast

Red to Mid Grey or Green - Tones - Equal Value



Colour Bias Colour Wheel

The colour bias colour wheel accepts the idea that primary colours are not an absolute concept . Because of this, this wheel has two colours for each of the yellow, red, and blue primaries. Each of these hues has an accepted bias toward the secondary colour between two primaries. For maximum colour potential, particularly in the area of painting with either transparent or opaque fluid media, this double primary will increase your palette.